

# GRAIGNAMANAGH HOUSE, KILKENNY

MR. CARROLL'S HOUSE IN KILKENNY

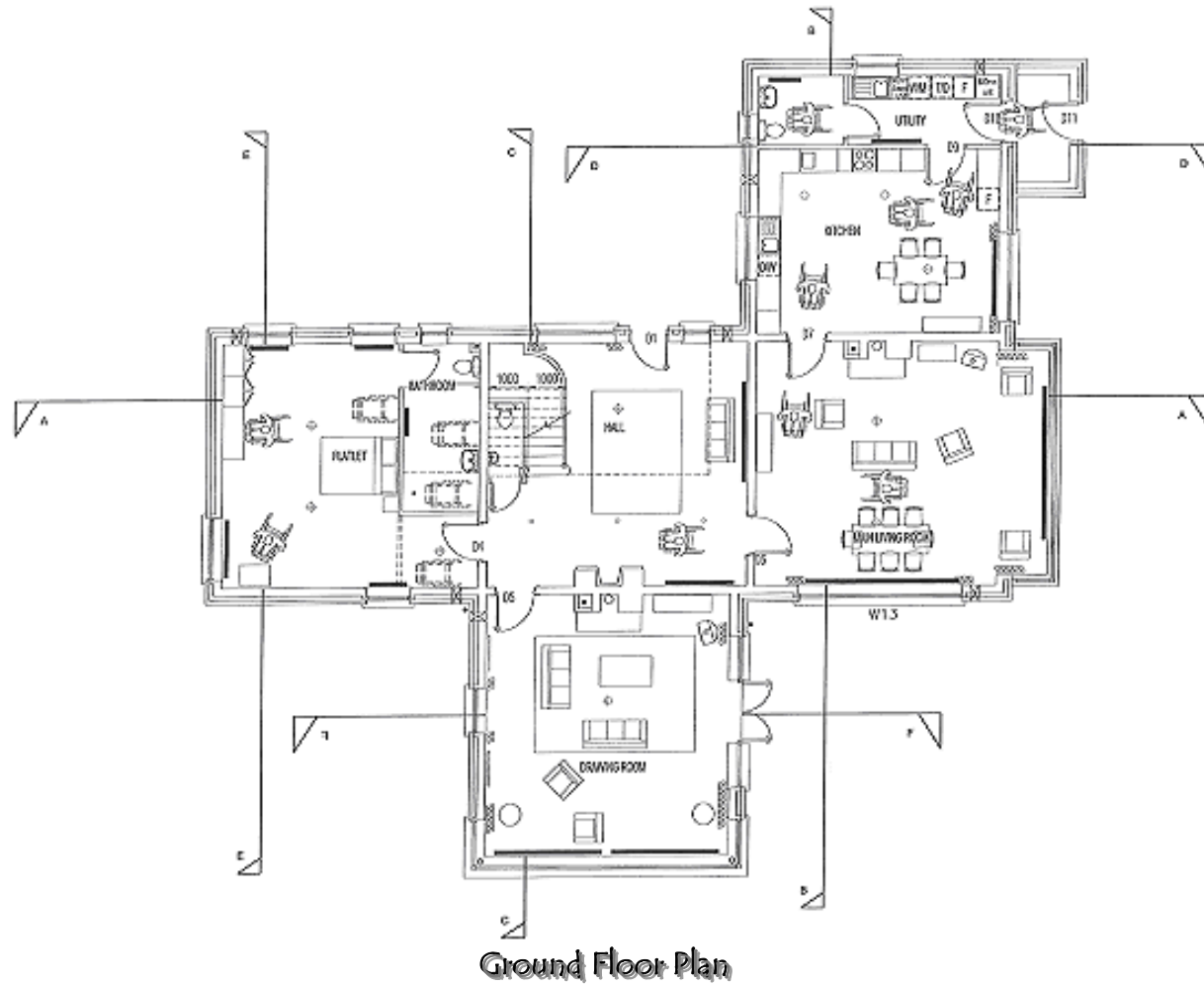


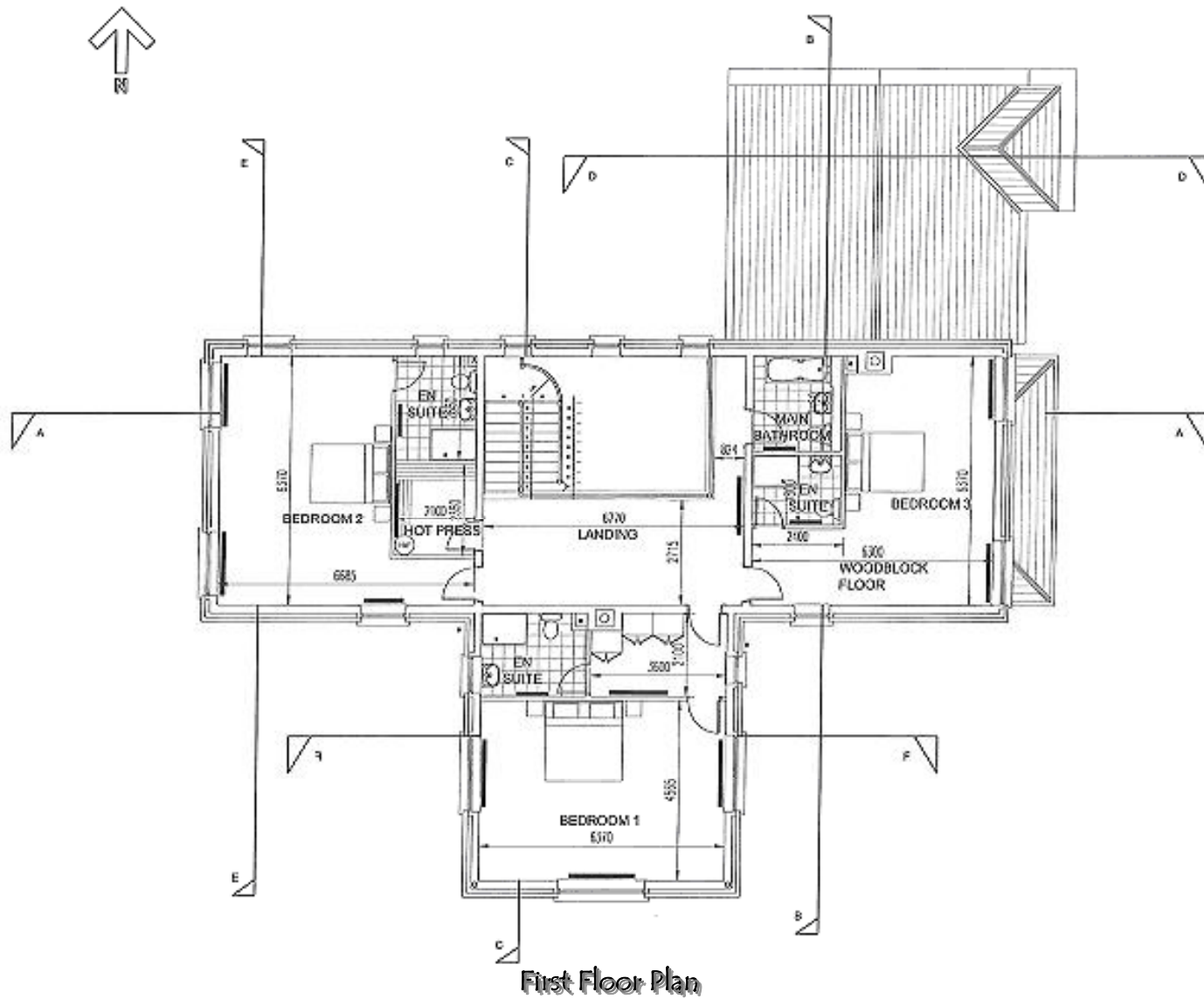
FRONT VIEW OF HOUSE



REAR VIEW OF HOUSE

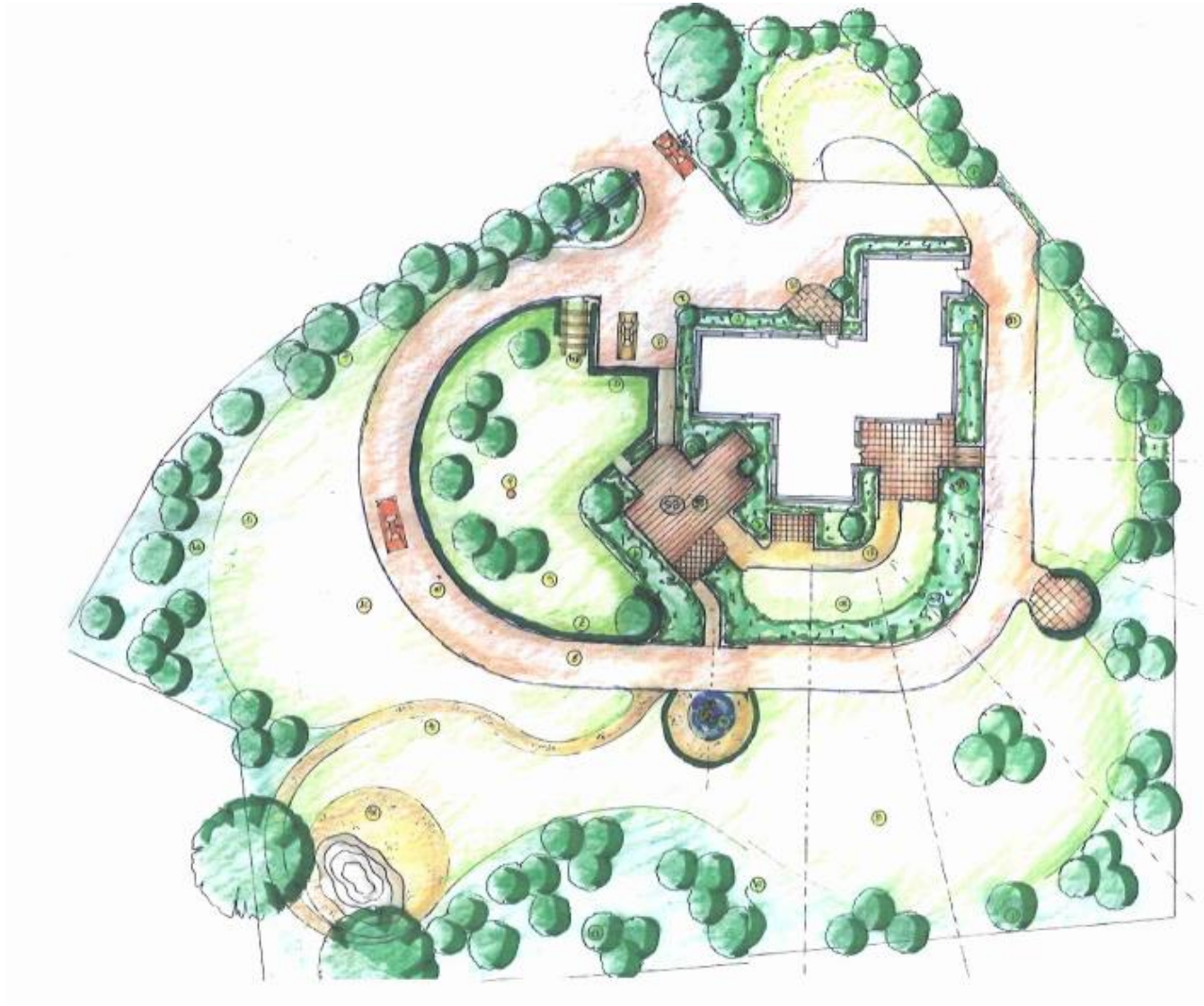
# FLOOR PLANS





First Floor Plan

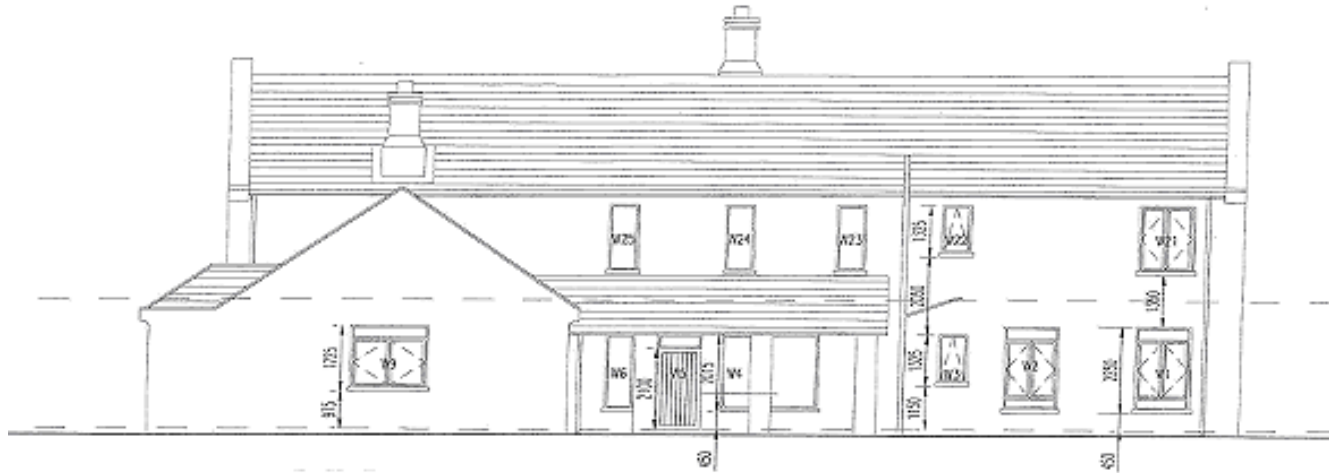
## GARDEN LANDSCAPE LAYOUT PLAN







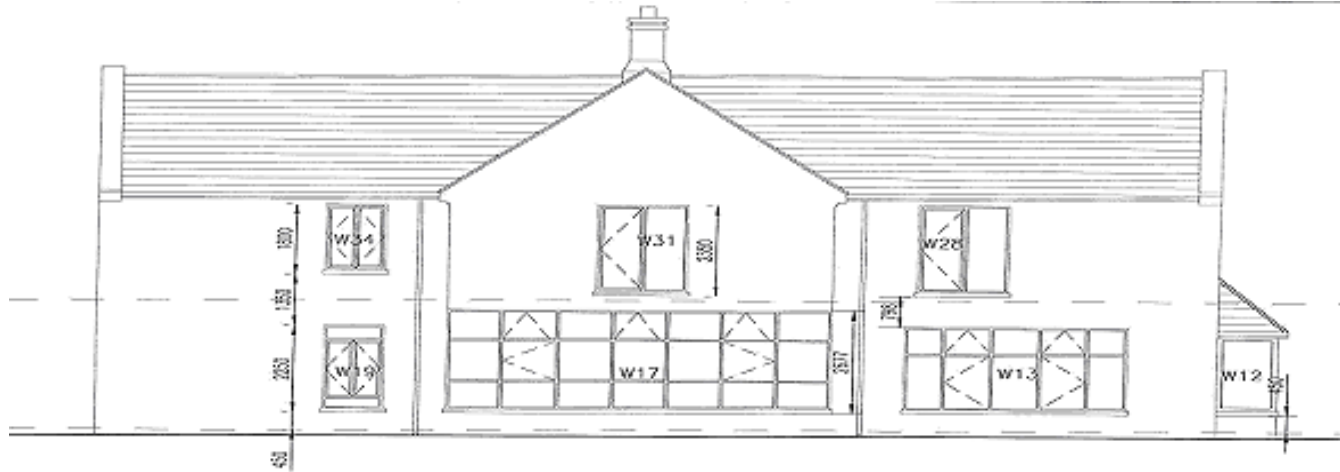
# ELEVATIONS



North Elevation



West Elevation

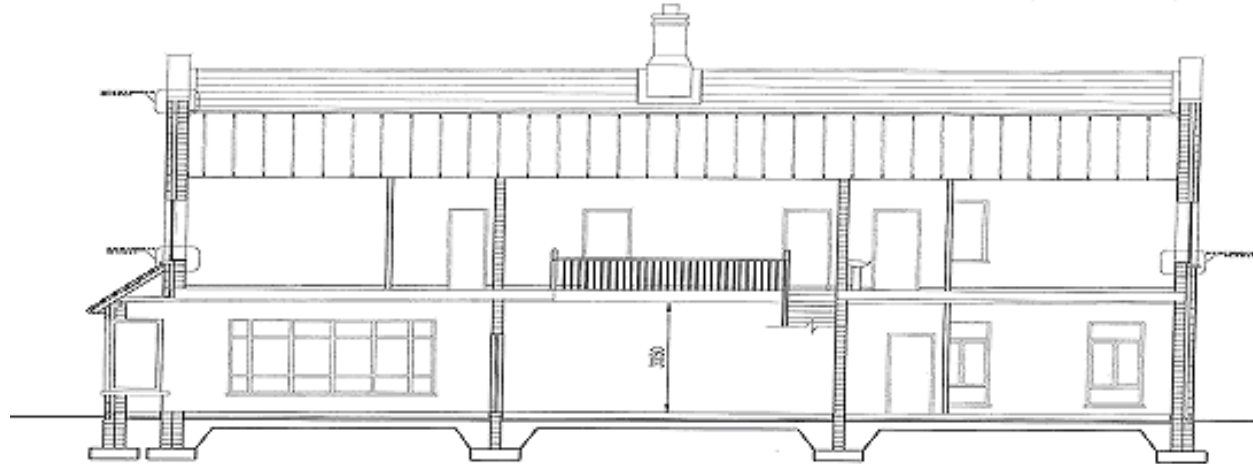


South Elevation

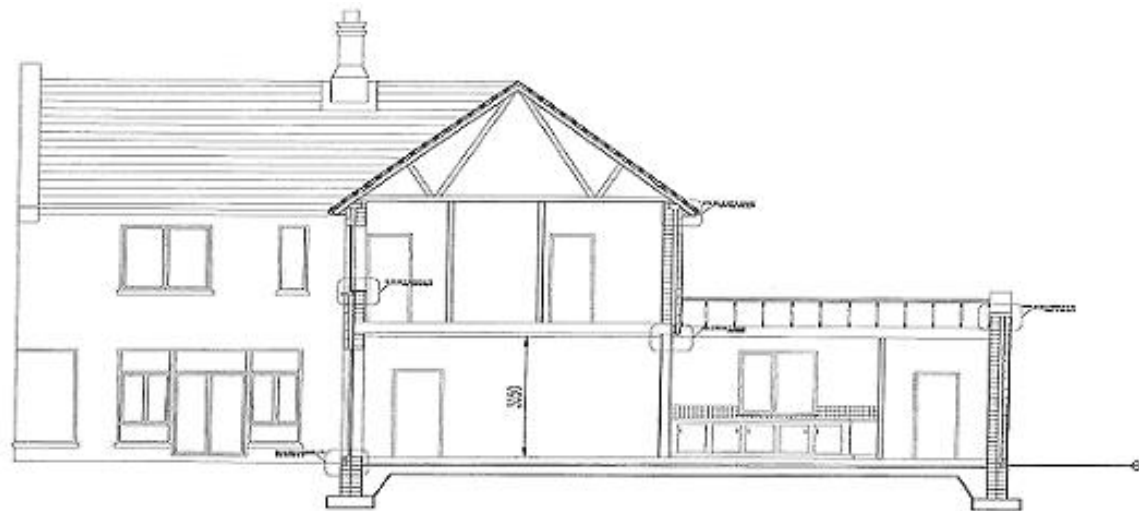


East Elevation

## SECTIONS



Section A-A

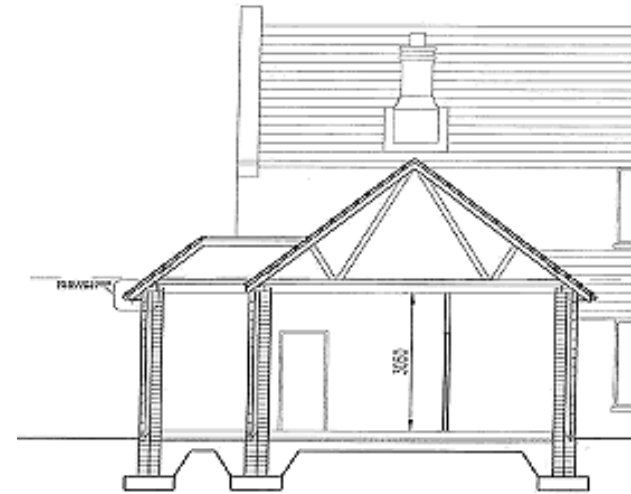


Section B-B

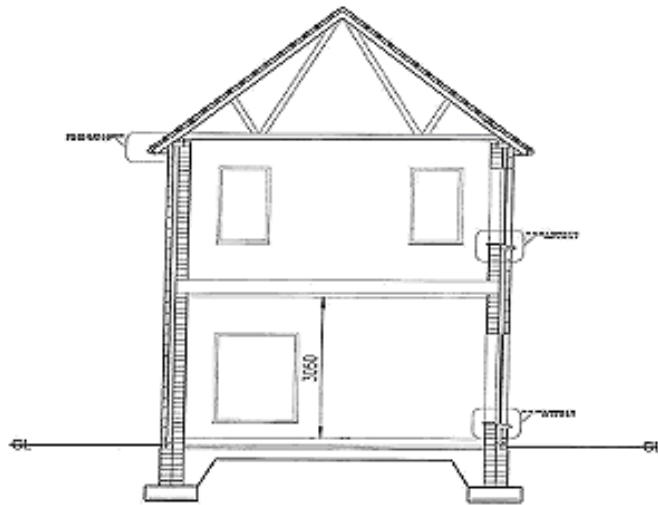




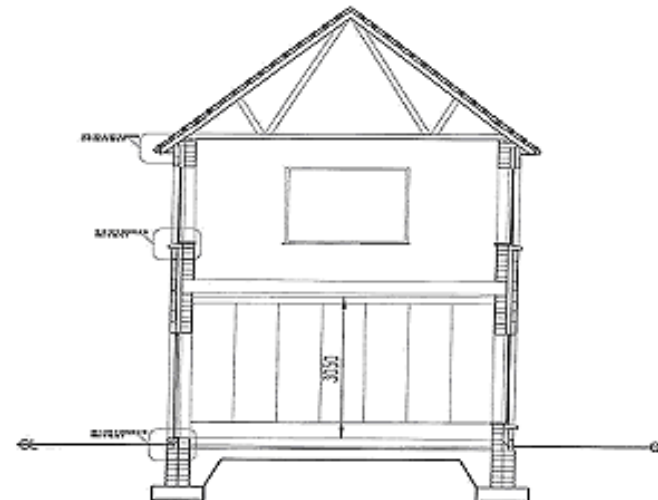
Section C-C



Section D-D



Section E-E

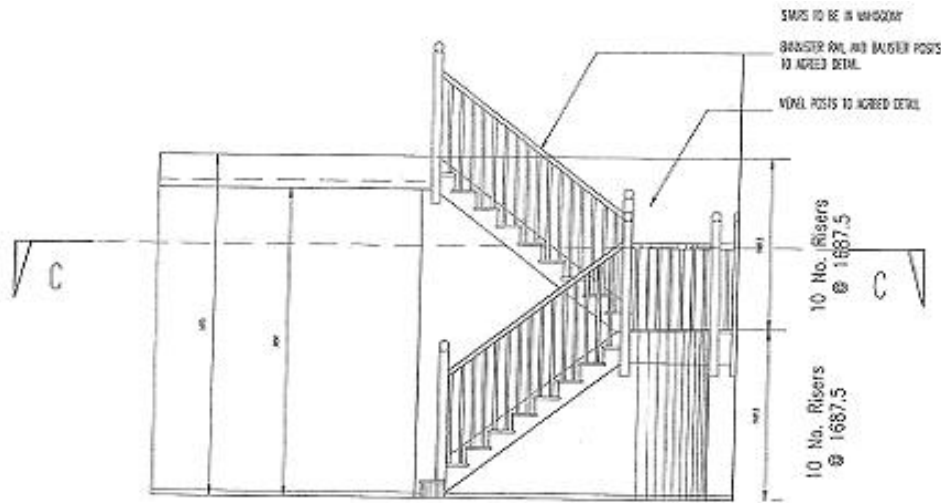


Section F-F

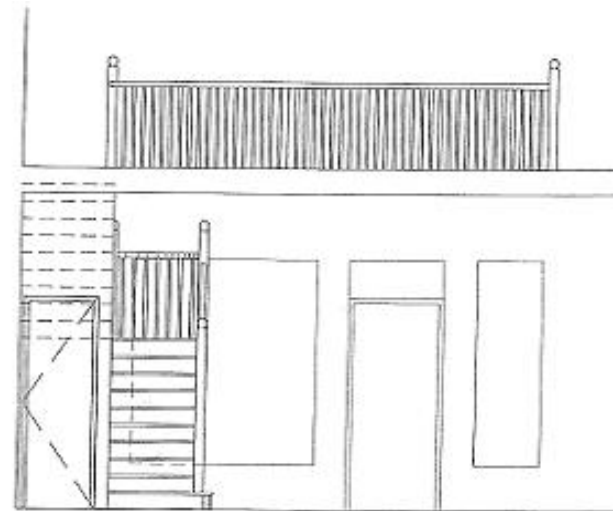
## 3-D KITCHEN DETAILS



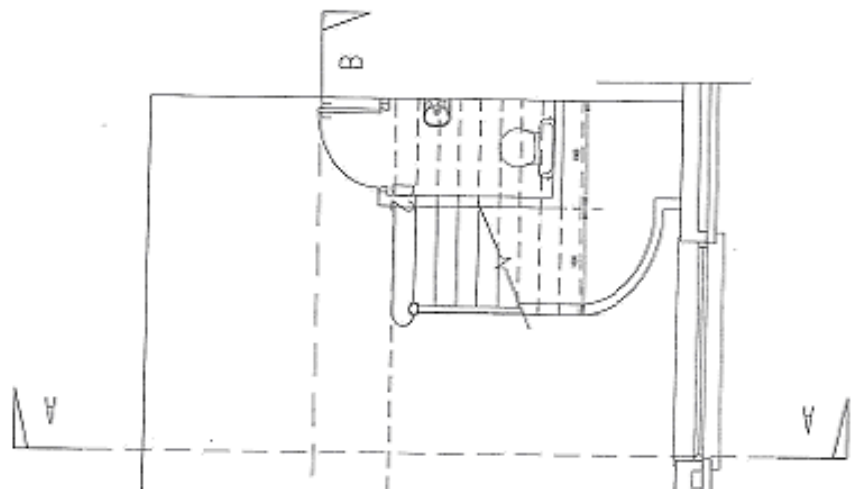
# STAIRS DETAILS



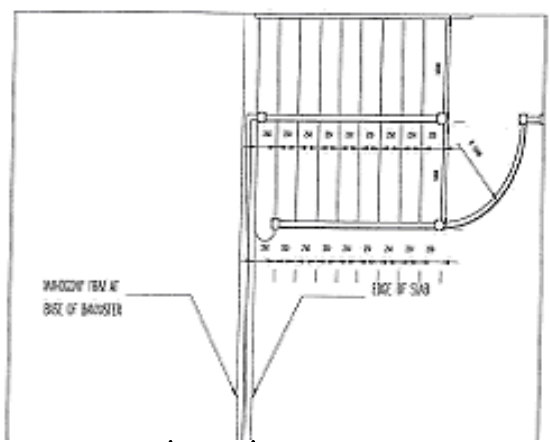
Section A-A



Section B-B

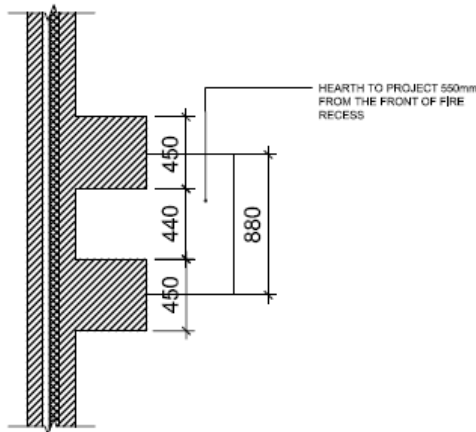


Section C-C

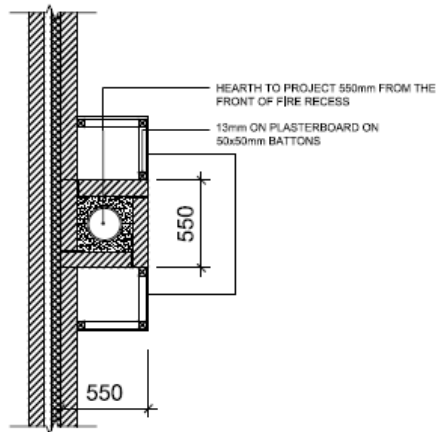


First Floor Plan

# CHIMNEY DETAILS



Section 1

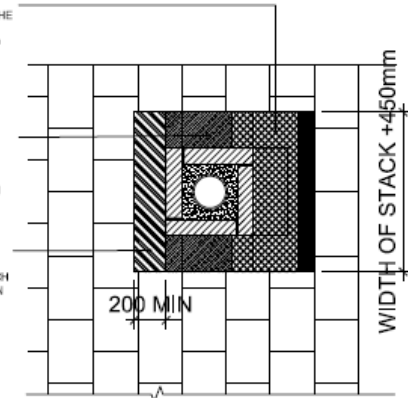


Section 2

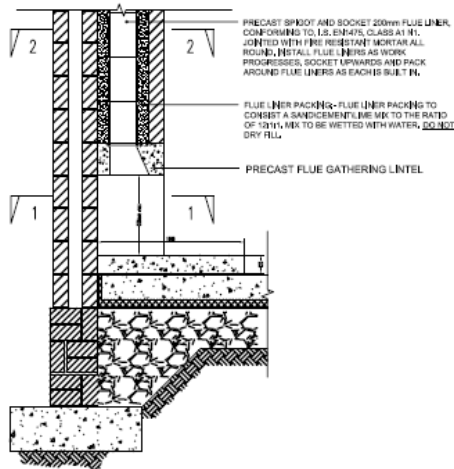
**GUTTER FLASHING:** LEAD SHOULD BE THE WIDTH OF THE STACK PLUS 450mm, THE VERTICAL UPSTAND SHOULD BE AT LEAST 100mm UP THE ABUTMENT, FINISH THE ROOFING UNDERLAY WITH A 100mm LAP ONTO THE LEAD

**SIDE ABUTMENT FLASHING:** LAY TILES AS CLOSE AS POSSIBLE TO THE STACK, CHASE OUT BRICKWORK MORTAR JOINTS TO A DEPTH OF 25mm AND FLASH WITH CODE 4 LEAD FLASHING.

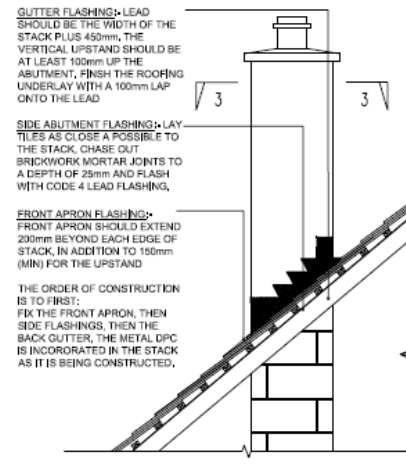
**FRONT APRON FLASHING:** FRONT APRON SHOULD EXTEND 200mm BEYOND EACH EDGE OF STACK, IN ADDITION TO 150mm (MIN) FOR THE UPSTAND



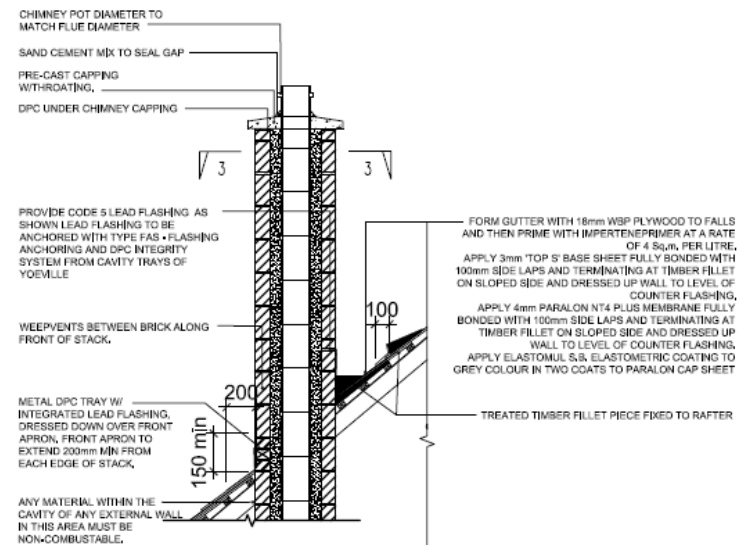
Section 3



Detail 1

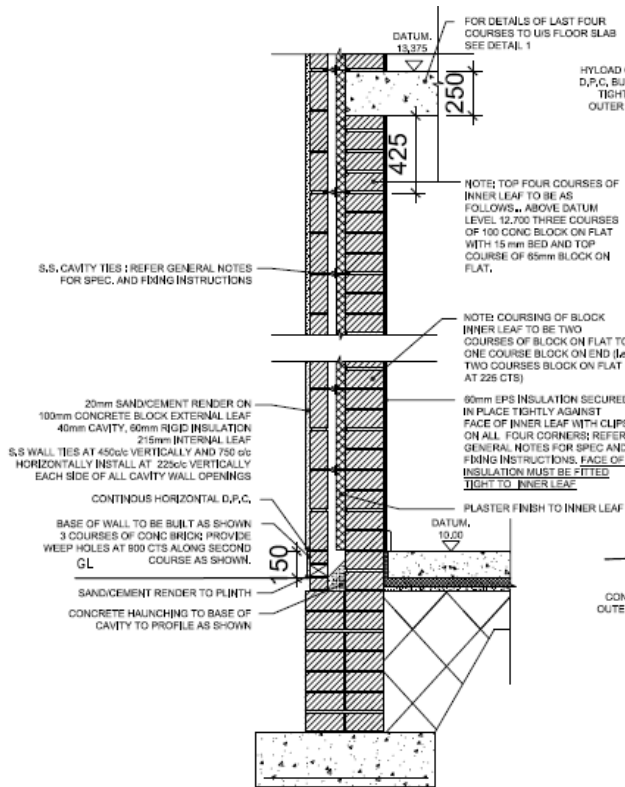


Detail 2

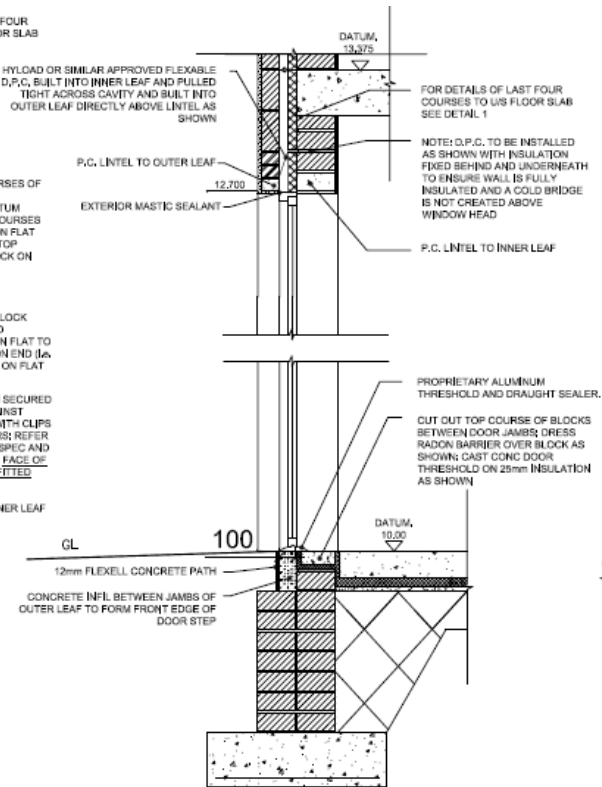


Detail 3

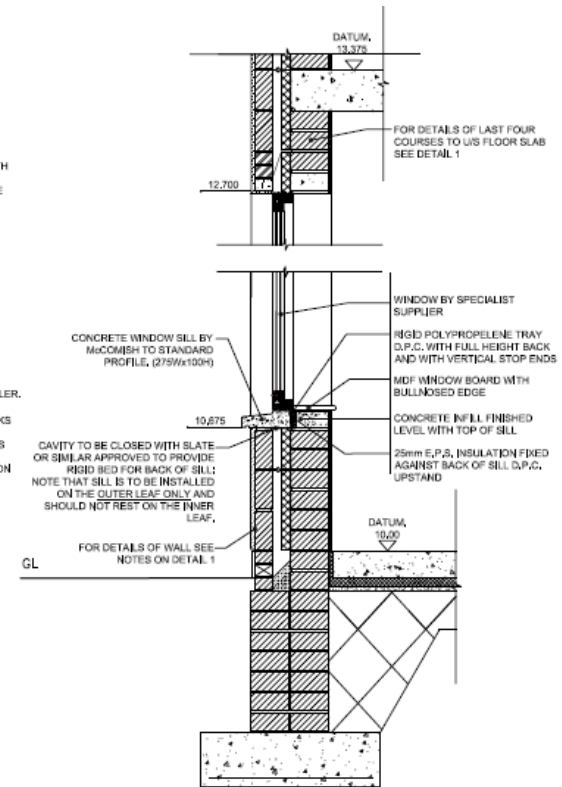
# WALL BUILD-UP DETAILS



Detail 1 - Rising Wall



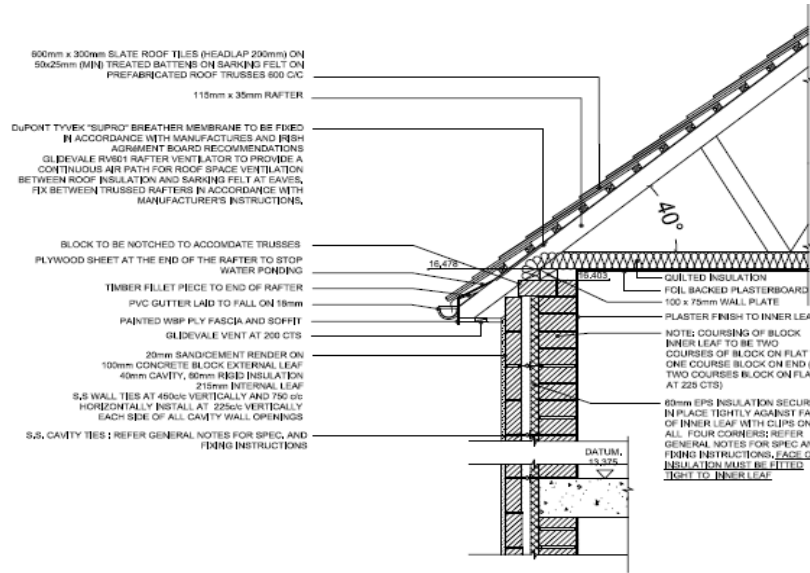
Detail 2 - Door to Outside



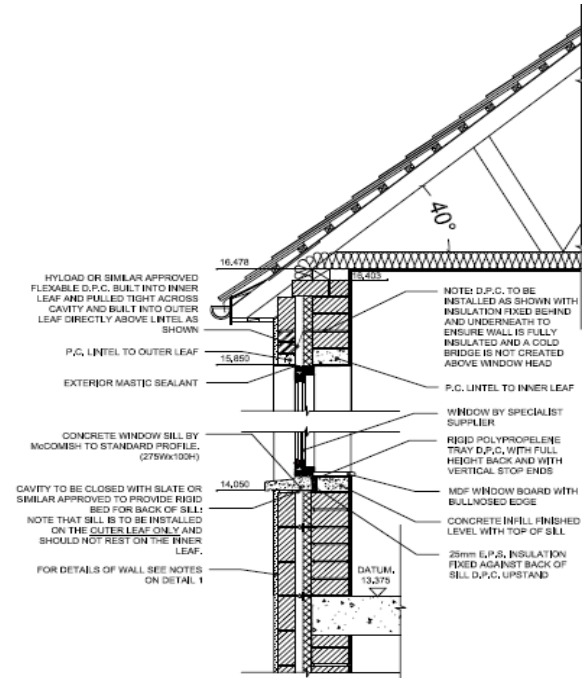
Detail 3 - Sill and Head



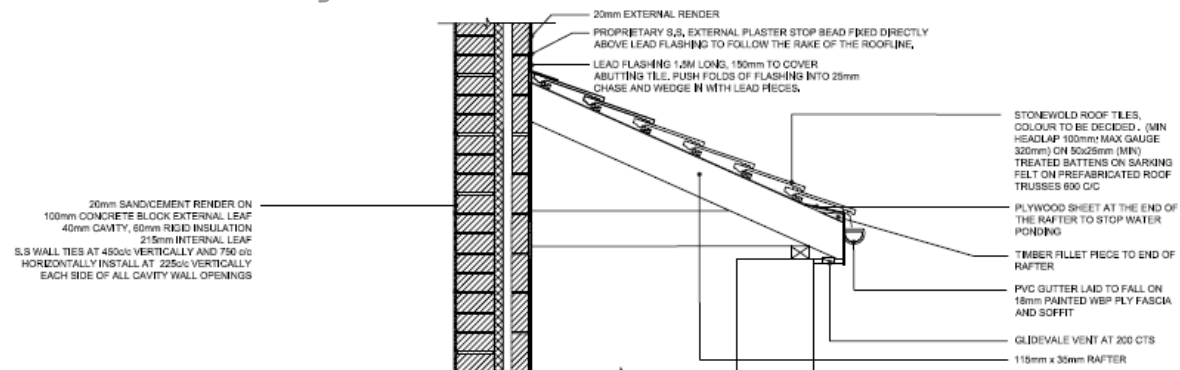
# ROOF DETAILS



Detail 5 - Rising Wall and Roof

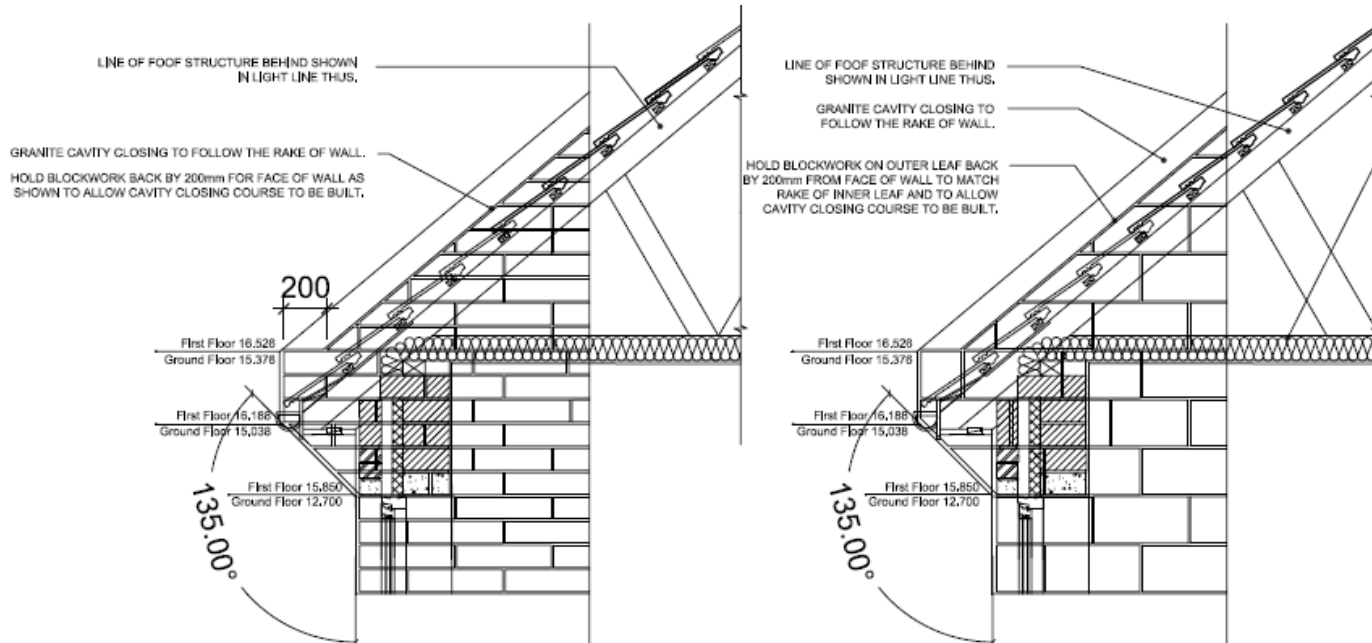


Detail 6 - Sill, Head and Roof Section Detail



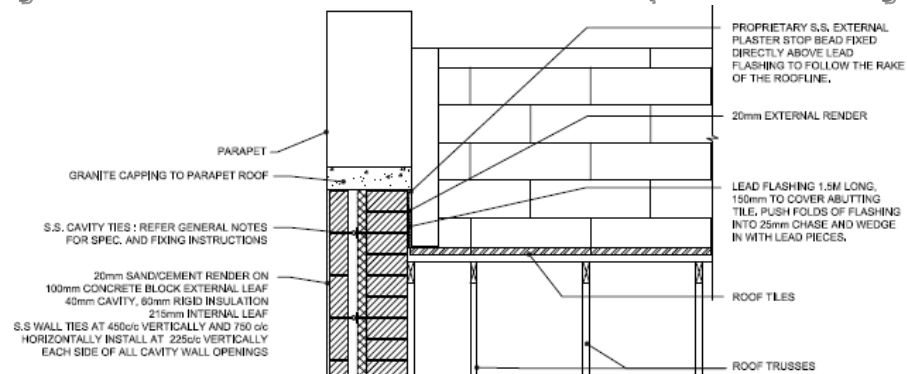
Detail 4 - Porch Roof Section Detail

## PARAPET DETAILS



Detail 8 - Parapet Section through Internal Leaf

Detail 9 - Parapet Section through External Leaf



Detail 7 - Parapet and Roof

## SITE PHOTOS



Internal View, Living-Room



Rear View, Bay Window



Front View, Entrance



View from back of House



Rear View, ESB Line